

OUR KARMANN-MOBIL MOMENT



CATALOGUE
2019|2020

KARMANN
 *Mobil*

Your holiday!
As long and comfortable
as you want

Recreational vehicles are freedom, an everyday vehicle and a retreat all in one. It is therefore all the more important to find the right one. Here you go.

Find out which motorhome you want to discover the world in and which bed you want to dream about it in. Then the perfect vehicle just a heartbeat away and nothing more can stand in the way of a fantastic vacation. We will be glad to help you decide and show you the almost infinite feature options.

MODELS AND EQUIPMENT LINES

DEXTER WITH ALL-WHEEL DRIVE

Always Grip.

DEXTER

Motorhomes for short trips and long journeys.

DAVIS

Motorhomes from convenient to luxurious.

DEXTER MODELS WITH LIFT BED

Motorhomes with plenty of space and plenty of bed.

From Page 34/35

MODELS WITH DOUBLE BEDS

Dreamy sleeping comfort for two.

From page 10/11

MODELS WITH SINGLE BEDS

Always have your own bed with you.

From page 26/27



When will
We're



we get there? already here!

**We didn't know this place until just now. Now we never want to leave again.
Or is it even nicer somewhere else?**

Can a place be more idyllic or soothing or further away from everyday life? Here, between mountains and valleys, your pulse calms faster than you can say "yoga". In places like these, pure relaxation is in the

air and with every breath you can feel that you are in a special place. There are many beautiful spots like these. And there's hardly a better way to get to know them, than with a Karmann-Mobil motorhome.



Fixed itineraries? We would rather find our own way

The plan for your tour? Not having the plan. Just take off, follow your curiosity and take in new impressions.

Why should you commit to just one place when there are so many beautiful places? Why decide months in advance where you want to be months later? And why be guided by travel brochures when your own longing is clearly better advisor? Well, why actually? The world has so much to offer — time to take a discovery tour.



Beautiful in many colours

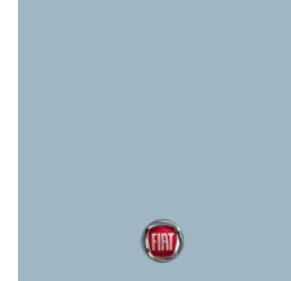
**You alone decide where the journey leads.
Of course this also applies to the equipment.**

Would you like a motorhome that suits your taste in every detail? We can arrange for that. Take a moment and let your individual preferences lead the way. There are numerous options and an infinite array of combinations to choose from. The result is individual and, above all, matches your taste.

DEXTER & DAVIS PAINT FINISHES



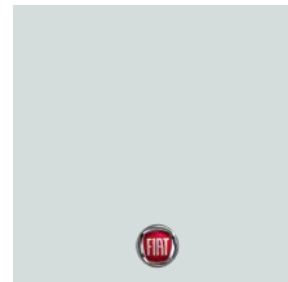
DARK RED



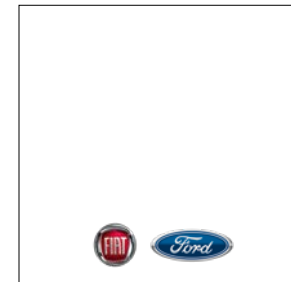
ICE BLUE



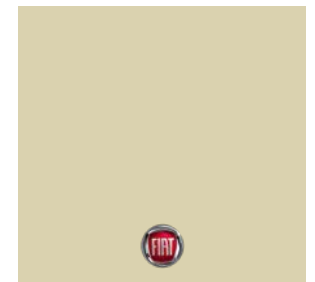
CHROME BLUE



CAMPOVOLO



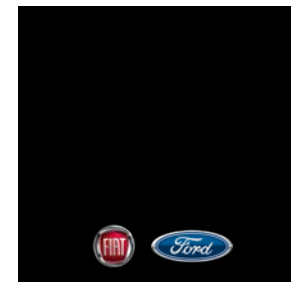
WHITE



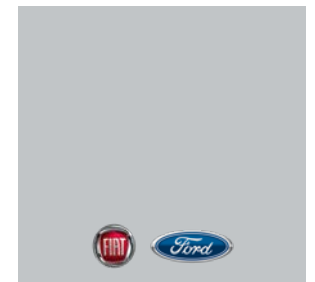
CHAMPAGNER



IRON GREY



BLACK



SILVER

Drive as others like to live

Taste is individual — just like our motorhomes and their equipment. And which variant do you like?

DEXTER



2

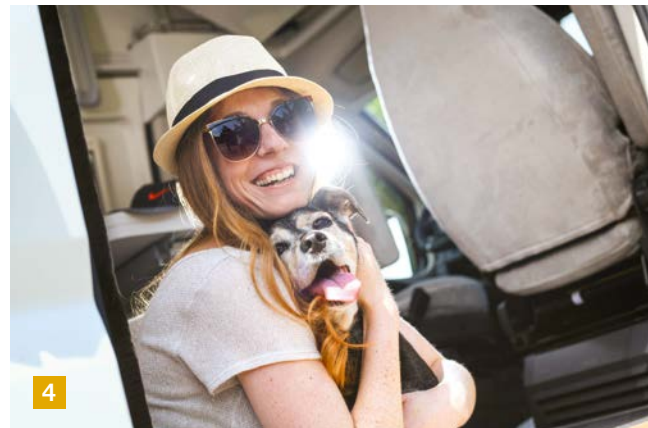


3

DAVIS



1



4

- 1 Spacious or compact?**
Depending on the space you need
- 2 Tablet or table?**
Your personal taste decides
- 3 Simple play to lie down or bedchamber?**
Sleep as you like
- 4 Exciting or relaxed?**
Your motorhome, your style

How long should your holiday be?
5.42 m? 6.36 m? Or even something in
between? The choice is yours!



MODELS WITH DOUBLE BEDS



Sweet dreams at night and a dream in the morning

**That's the beauty of camping:
The choice is yours!**

You can sleep where you want and even decide how you want to sleep. What will it be for you? What should your night camp look like? Would you like to enjoy lots of space and closeness at the same time? Then we recommend a spacious double bed. This allows you to practically take your bedroom with you on your journeys.

In many of our motorhomes, a folding double bed with a huge storage space is part of the standard equipment. We will be glad to present you the various models and advise you — we don't want the choice to cause you sleepless nights.

*Add comfort – an additional bunk
bed provides sleeping space for the
whole family.*

Limits? What's that?

The real adventure begins where the roads turn into paths.

The rocky routes often lead to the most wonderful places. Sometimes they are not even asphalted and in bad weather often hardly accessible with an ordinary motorhome. This is an easy exercise for the **Dexter 560 4x4**.

With its indestructible all-wheel drive, it guides you safely through difficult terrain and opens up many new ways to enjoy your holiday. Thanks to a towing capacity of up to 2.8 tonnes, you can also take heavier sports trailers with you on your journey.

The generously sized double bed is also a real treat. This beautiful lounge area is located across the rear of the vehicle. You can therefore even take a different direction at night. In the light of the moon passing through the Dexter's big side window. Rest up and be able to move mountains the next day. Or climb them. As you like.



Elegant shell, striking core – the allroad Dexter from the inside.



Always find a way. Even when it comes to creating space.





- 1 Superior on the inside, too.**
Everything is in its place here
- 2 Adventure from the front.**
The attractive Dexter front section
- 3 Practically solved.**
Folding bed for more space
- 4 Comfortable.**
Bedroom with lots of storage space



- 1 The interior.**
Beautiful and practical
- 2 It fits in there.**
Cabinet for clothes and more
- 3 Enjoy your meal.**
All that's missing here are the ingredients
- 4 Comfort is a must.**
Freshen up for the next adventure

Unique like your holiday

Fully responsive on gravel, snow or ice, alert on the road, wonderfully idiosyncratic in its features – the Dexter 560 4x4 is full of talent.

All-wheel drive, slippery, gravel. Do you associate these words with comfort and upscale features? Probably not, but you could. After all, the **Dexter 560 4x4** combines the best of both worlds in the most individual way.

A cosy 5-seater seating group, an 80-litre refrigerator, a toilet with shower and mountain of comfort await you in just under 6 metres length. With this equipment and all-wheel drive, you can go anywhere comfortably. At any time of the year. Thanks to efficient insulation and powerful diesel heating, the Dexter 560 4x4 is also an ideal base camp in winter. Before you continue your journey far from the beaten path.

Special highlights:

- ⊗ EcoBlue engines up to 170 HP
- ⊗ Strong all-wheel drive
- ⊗ Powerful Combi 6 diesel heater
- ⊗ Versatile storage options
- ⊗ Attractive price-performance ratio
- ⊗ 5-year warranty
- ⊗ Trailer load of up to 2.8 tonnes



2



3



4

*All-wheel drive outside,
all-inclusive inside. That's
just how Dexter rolls.*

Signs? We simply follow our curiosity

Whoever goes where others go will always be where others are. This is not your thing. You like to take a different path and you'll be rewarded for it.

With wonderful experiences of nature, almost untouched landscapes and idyllic hiking trails. Out here you can let your thoughts run free or just think of nothing at all and listen to the chirping of the birds or the crackling of the branches. Before returning to your gleaming motorhome.



Wonderful nature outside. Inside too!

There are motorhomes. And then there are motorhomes that change your whole life. Like the Dexter.

Your holiday will never be the same with it, because it lets you experience nature in a completely new way. And, by the way, this starts even before you leave. After all, the Dexter boasts a modern interior with a lot of real wood. A distinctive walnut look and light grey surfaces create a lot of striking charm in combination. You can feel this on every centimetre and see it in every detail. The kitchen unit, for example, is wonderfully robust and yet shines with fine chrome fittings. The dreamlike double bed should also be to your liking. It is also positioned transverse to the vehicle, thus providing a lot of extra space on the go – even in the compact, yet comfortable **Dexter 540** and especially in the larger models like the **560** and the **580**, which offer plenty of space to unfurl. You can enjoy this freedom year-round – the robust Dexter is prepared for any weather with its efficient insulation and high-performance heater. How about skiing in the Pyrenees?

Special highlights:

- ⊗ High-quality furnishings with solid wood elements
- ⊗ Folding double bed
- ⊗ Spacious washroom with swivelling toilet
- ⊗ Large refrigerator and high-quality kitchen unit
- ⊗ Seating group with up to 5 seatbelts
- ⊗ Bunk beds for Dexter 560 and 581
- ⊗ Year-round use with powerful 6 kW heating system
- ⊗ Skyroof (except Dexter 560) on request

*Everything included.
Just not everyday life.*



*Practical and robust
are always trendy.*



- 1 | Bedroom on tour.**
Dreamlike, this rear bed
- 2 | Dual-flame hob with splash guard.**
The kitchen with you
- 3 | Spacious bathroom.**
Much more than a privy
- 4 | Lots of wood and even more space.**
The dining and living area

- 
- 1 **Interior view.**
Design as far as the eye can see
- 2 **Sitting in style.**
Beautifully detailed quilting seam look
- 3 **Splendidly furnished.**
Your motorhome from the inside
- 4 **Bigger window.**
Decisively more light
- 5 **Comfort bathroom.**
Comfortably be to yourself

Enjoy the view

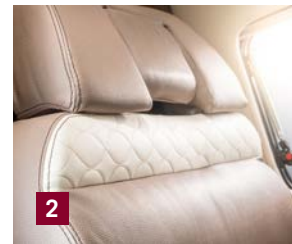
Of course, a motorhome should above all be reliable, safe and practical. But why shouldn't it also look extremely stylish?

If you look at the new **Davis**, it is hard to imagine anything other than a beautiful holiday. With its bright interior, high-gloss surfaces and a multitude of elegant furnishing details, the motorhome is a work of art in its own right. But also extremely practical.

After all, the compact **Davis 540** not only provides room for impressive design, but for everything else as well. A bathroom with a shower, a modern kitchen finish, a wide dinette window, a generous double bed, high-quality furnishings, plenty of storage space and yet it still feels spacious. Even in the cab, which offers a remarkable amount of headroom. The best visibility is provided anyway, but not for others looking in. This is due to the new, optional front darkening feature, which provides more privacy and less sunlight. Speaking of the weather, all Davis models can be used all year round thanks to their elaborate insulation and winterproof diesel heating.

Special highlights:

- ⊗ Engine up to 180 HP
- ⊗ Elegant interior design
- ⊗ High-quality furniture
- ⊗ Atmospheric LED lighting
- ⊗ Powerful diesel heater
- ⊗ Superior bathroom comfort
- ⊗ Lots of space and storage
- ⊗ Folding rear bed



A little space miracle – the Davis creates space where there is none

MODELS WITH DOUBLE BEDS

Nice place you have here!

**You can never have enough space or enough comfort
and nobody has ever complained about having too much style.**

In the larger **Davis models 591** and **592**, you can enjoy all these advantages in abundance. And in excess length. About 50 cm more means so much more spaciousness in the large Davis. And you can feel this everywhere: in the spacious windowed bathroom, in the long kitchenette, in the spacious lounge and also at night, when you can spread out wonderfully in your wide double bed.

In the **Davis 591** you also save space when sleeping. A charming bunk bed makes this possible. Also highly noteworthy: the refrigerator in the **Davis 592**, which is almost epic in size at a full 142 litres. So there will certainly be no shortage of cool drinks and fresh food. A Davis of your choice will take care of the rest.

Special highlights:

- ⊗ Engines up to 180 HP
- ⊗ Impressive interior design
- ⊗ Quality furnishings
- ⊗ Atmospheric LED lighting
- ⊗ Powerful diesel heater
- ⊗ Superior bathroom comfort
- ⊗ Lots of space and storage
- ⊗ Folding rear bed

*Wellness included.
Your comfort bathroom with daylight.*



*XXL refrigerator.
Pack in the treats.*



- 1** | **Plenty of room.**
Everything safely stowed away
- 2** | **Large bathroom.**
Close the door and enjoy comfort
- 3** | **Interior design.**
Lots of white, lots of attention to detail
- 4** | **Lots of supplies.**
The 140-litre refrigerator in the Davis 592
- 5** | **Two double beds.**
For families and dreams

- 
- 1 | **Interior view.**
Design as far as the eye can see
- 2 | **Lots of natural light.**
Thanks to the Skyroof
- 3 | **Design in detail.**
Wall units with light strips
- 4 | **Cook more beautifully.**
With atmospheric lighting
- 5 | **A lot safer.**
Rounded table edges

It can't be outdone? Oh, yes it can!

If you like the new Davis, you'll like this even more. After all, this elegant motorhome can be furnished with even more stylish and luxurious features. This surprised us, too.

The new **Davis lifestyle package** actually goes one step further in terms of class and comfort. The absolute highlight is a large Skyroof above the driver's cab. Instead of the ceiling, you can now see the morning sun or a rainbow and at night you have an unobstructed view of the Milky Way. Wonderful!

You can be astonished inside as well. The natural light of the Skyroof panoramic roof, together with the even more elegant features, provides nothing less than a completely new feeling of space. A white kitchen unit, the additional ambient lighting, fine chrome applications, indirect LED lighting – style fills the whole room and is embellished with cleverly integrated storage compartments. Do you feel like camping on a grand scale?

Special highlights:

- ⊗ Skyroof panoramic acrylic roof
- ⊗ Kitchen unit with white mineral worktop
- ⊗ Ambient lighting on the wall unit and kitchenette
- ⊗ Rear doors with monochrome interior trim
- ⊗ Decorative strips in chrome look on the wall unit
- ⊗ Additional storage cupboards above the rear door



Completely undisturbed. Front darkening makes it possible.



Shiny fittings. It is worth paying attention to the details here.

Next destination: Cloud 7

**No matter how turbulent the day was,
it ends with a very, very gentle landing.**

In your very own bed, you can sleep heavenly everywhere. Well rested, you can proceed on the next morning. Which is highly recommended, because there are still so many beautiful places in the world. And so many places to wake up smiling in the morning.





Dreamlike comfort

In some places, one wishes that night would never fall.

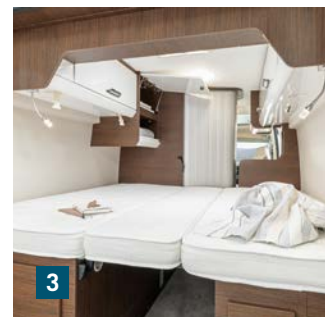
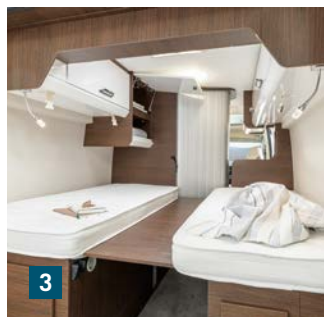
In the **Davis 600** or **Davis 620** you will look forward to it every single day. Both models have the nightly luxury of two comfortable single beds. And because almost everything is variable at Karmann-Mobil, you have the choice here too. The beds can be joined to form a cosy double bed with a single action. And the same applies during the day.

Plenty of space and lots of ways to make clever use of it. The best example of this is the comfort bathroom with variable usable space in the **Davis 600**. If this meets your expectations of comfort, then the modern well-lit interior will also match your taste. Provided you like stylish design and an exclusive ambience. We'll just assume you do.

Special highlights:

- ⊗ Comfortable single beds
- ⊗ Spacious bathroom with variable floorspace
- ⊗ Folding washbasin
- ⊗ Pleasant front darkening
- ⊗ Modular storage boxes at the rear of the Davis 620
- ⊗ Combi 4 diesel heater

The Davis models are also very big on detail.





- 1 **Finely tuned.**
Delicious above, space below
- 2 **Wall units with indirect lighting.**
Wonderful ambience throughout
- 3 **Exactly as you like.**
Single or double bed
- 4 **Sleek furnishings.**
Comfort bathroom for high standards in the Davis 600
- 5 **Interior.**
Reach your destination in style in the Davis 600

- 
- A wide-angle photograph of the interior of a motorhome. Two single beds with white tufted mattresses are positioned side-by-side. On the left bed, there is a straw hat and a floral patterned cloth. On the right bed, there is a blue and white striped towel with a pair of sunglasses. The walls are covered in dark wood paneling. Above the beds, there are white storage cabinets with wood-grain doors. A window on the left wall shows a landscape with a giraffe. In the background, the motorhome's entrance and the front driving area are visible. A list of five features is overlaid on the right side of the image.
- 1 Comfortable beds.**
Sleep separately, enjoy together
 - 2 A feast for the eyes.**
Kitchen unit with ambient lighting
 - 3 Elegant hob with splash guard.**
Enjoy à la carte
 - 4 The interior.**
Luxury fills the space
 - 5 Luxurious bathroom with integrated shower.**
Wellness on the go

The deluxe way to count sheep

In the heart of nature, yet surrounded by lifestyle and luxury — if this is how you imagine your holiday, then this is how you should imagine your motorhome.

The new **620 XL version** of the **Davis** leaves nothing to be desired. Especially not when it comes to the first-class features. Would you like to enjoy a quiet night after a busy day? Comfortable single beds cordially invite you to do just that. Would you like to prepare a delicious dinner? If so, then the large kitchen unit will match your taste. Would you not want to do without an appealing ambience anywhere? Thanks to the elegant furnishings, you always have it with you. Do you like it especially stylish? The optional **Davis lifestyle package** offers plenty of style and travel enjoyment on top.

With chic chrome-finished furniture surfaces, wall covering in leather look, discreet LED lighting and pretty ceiling lights. The absolute highlight is the optional Skyroof above the driver's cab. The holiday has a few more stars and the sun is always present. Enough reason to shine? Sure, but the Davis offers so many more.

Special highlights:

- ⊗ Extremely spacious
- ⊗ Large kitchen with 80-l refrigerator
- ⊗ Variable storage space in the rear
- ⊗ Bathroom with sliding washbasin



2



3

*Glamorous
or functional?
The Davis can
provide both.*



4



5

MODELS WITH SINGLE BEDS

1

- 1 The interior.**
Plenty of space for holiday enjoyment
- 2 Skyroof.**
Great view as standard
- 3 Complete kitchenette.**
Enjoyment knows no bounds
- 4 Additional storage space.**
Large luggage right under the bed
- 5 Single or double bed?**
You can still decide after brushing your teeth

Carved from a different wood

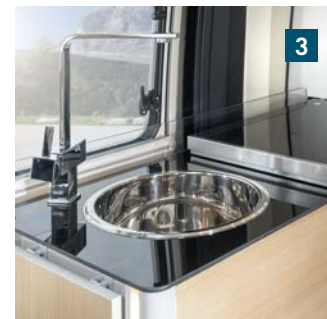
The Dexter has a very special character, but provides the same thing in the end: independence of the most relaxed kind.

In the Dexter models with single beds, you can enjoy the comfort of your own sleeping space. Those who would like to get a good night's sleep, will feel right at home here. And those who want to experience an exciting day afterwards can have that, too.

The **Dexter 600** is almost 6 metres long and has everything you need for your personal adventure after breakfast: a great comfort bathroom, a clever folding table, a bar seating group with display cabinet, a two-burner cooker, various storage spaces, robust furniture with a lot of solid wood. All that is missing is the route. And that's where you come in. Would you like to travel as far as possible, take as much as possible with you or have a lot of space? If so, then the **Dexter 625** is your motorhome. Large kitchen? 109-litre refrigerator? A more than spacious bathroom? Two single beds? Spacious wardrobe? Seating for four? More than enough storage space? It's all there in the **Dexter 625** and yet the space always a light airy feel. Perfect for long rides and big plans.

Special highlights:

- ⊗ Spacious design
- ⊗ Single beds can also be used as double beds
- ⊗ Comfort bathroom
- ⊗ 6 kW winter heating system
- ⊗ Bar seating (Dexter 600 only)
- ⊗ Solid high-quality kitchen unit
- ⊗ Skyroof (optional)



The big Dexters have a lot to offer. Here's just a tiny excerpt from the Dexter 625.

MODELS WITH LIFT BED



Up and away

**Sometimes it really doesn't take much to be happy.
A weekend holiday and a cosy spot, for example.**

Okay, a little sun would be nice too. And a fresh breeze, if it can be arranged. Oh, and most importantly, silence. But otherwise please don't bother. Anything else would just serve as a distraction from what matters. From the salty sea air, the gentle rocking of the waves and the ships passing slowly on the horizon. This is the perfect place to enjoy the harmony of the moment. And to think about where you want to spend a nice day tomorrow. But first, you can look forward to the night — the perfect sleeping place is waiting. A lift bed with a wonderful motorhome around it.

*Into the wilderness,
into the water – or what else
do you have in mind?*



MODELS WITH LIFT BED

For the very well rested

Heavenly, like a lift bed. It takes up space only when you really need it.

The rest of the time, you have more storage space or more free space – as you like. And this is how our Dexter models are equipped otherwise as well: highly customised. The compact **Dexter 550** leaves nothing to be desired with its naturally beautiful furniture with solid wood elements, while offering an unbelievable amount of comfort. Is it bigger on the inside than on the outside? If you take a look at the spacious four-seat group with a sofa bed, the large corner kitchen and the convenient bathroom, you could almost think it's true. Especially as the other features are very extensive.

The **Dexter 550** is a little space miracle and this is mainly due to the retractable lift bed, which makes your Dexter virtually two-storey. You can therefore relax upstairs, while someone else reads a book in the comfortable seating group below. Or maybe a travel guide?

Special highlights:

- ⊗ Only 5.42 m long
- ⊗ Electronically controlled lift bed
- ⊗ Fully insulated GRP rooftop
- ⊗ Spacious corner kitchen
- ⊗ Large rear washroom
- ⊗ Practical sofa bed




Enjoy your freedom along the way? Here you go.



Space to the power of two.
Weren't there just seats here?



- 1 Large corner kitchen.**
What a tasty holiday
- 2 4 seats with seatbelts.**
Perfect for when friends come along
- 3 Comfort bathroom with shower.**
Space for your needs
- 4 Practical sofa bed.**
More sleeping comfort
- 5 Nice big lift bed.**
For a sophisticated sleeping experience

- 
- A wide-angle photograph of a motorhome's interior. On the left is a kitchenette with a sink, faucet, and wooden cabinets. A window above the counter looks out onto a green landscape. In the center, a long wooden table is set with bowls of food and chopsticks. Two large, beige upholstered seats with grey mesh backs are positioned on either side of the table. A magazine lies on the seat in the foreground. Large windows on the right side offer a view of a blue sea and distant mountains. The ceiling is white with recessed lighting.
- 1 Really authentic.**
Lots of wood, lots of natural charm
 - 2 Full of kitchen.**
With a folding worktop
 - 3 Cool solution.**
Comfortably pull-out refrigerator
 - 4 In the best of order.**
Wardrobe with clothes rack
 - 5 Pure pleasure.**
Bathroom with lots of space and comfort

Dreams come true. Now!

You can't book a holiday like the one you can have in a Dexter. You have to experience it. Just pack your bags and start your dream adventure.

You only have to do without boredom, as the **Dexter 595** has everything else on board. A luxurious bathroom with a separate shower, an electronically controllable lift bed, a high-quality kitchen unit and lots of charm of its own. The **Dexter 595** is just not like other motorhomes. It has a surprising amount of solid wood, radiates natural flair at all times and is even more practical than you would normally expect from a motorhome. The best example of this is its huge cupboard, which really provides room for everything. You can still store food somewhere else. After all, the Dexter also offers a high-volume drawer refrigerator. This is the only place that is cold in the Dexter. It is efficiently insulated, equipped with a powerful heating system and therefore absolutely winterproof. A vehicle for every season – quattro stagioni, as the Italians say.

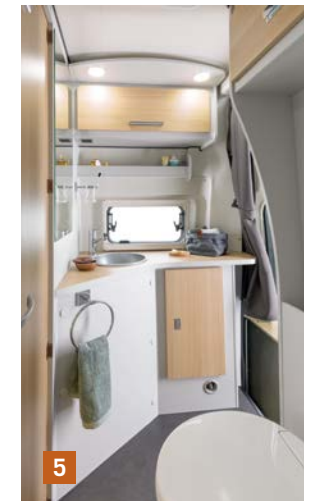
The same applies to the **Dexter 555**, because the family vehicle is hardly any less extensively equipped. With 6 sleeping places, comfortable furnishings with a large lift bed, spacious bathroom and unlimited space, the **Dexter 555** has everything you need on the road with the whole family. Adventure is guaranteed!

Special highlights:

- ⊗ Electronically controlled lift bed
- ⊗ Sofa bed in the seating group
- ⊗ 2 double beds (Dexter 555 only)
- ⊗ Large kitchen and wardrobe cabinet (Dexter 595 only)
- ⊗ Up to 5 seatbelts (Dexter 555 only)
- ⊗ Bathroom with separate shower in the rear (Dexter 595 only)



Big isn't everything, great is also important. The Dexter 595 is both. Good for you.

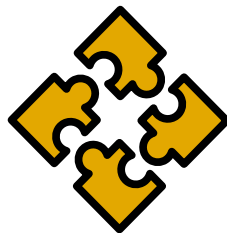


The KARMANN-MOBIL ADVANTAGES

As an absolute exception, you have no choice in this regard. Because no matter which model or which options you decide on, versatility and practicality in comfortable and high-quality furnishings are always included in Karmann-Mobil's strengths.



Single bed, double bed, bunk bed or storage?
It is entirely up to you.



MODULARITY AND VARIABILITY.

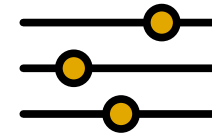
At Karmann-Mobil you will find a selection that leaves nothing to be desired. We offer the right motorhomes for all types of camping and countless opportunities to equip and furnish them fully individually.

Features such as the swivelling washbasin and toilette module show how to make the best use of space. Double!



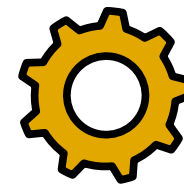


Kitchenette, refrigerator, pantry, closet – at times head-high, at times compact, always spacious. Experience the diversity.



INDIVIDUALITY.

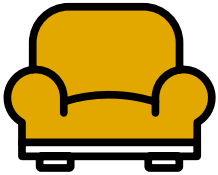
With different vehicles, a wide variety of sizes and lengths as well as various kitchen and bathroom variations, we offer the right thing for every taste and need. Even the beds adapt to individual needs. In some Davis and Dexter models, single beds can be transformed into a double bed or relaxation area in no time. Elsewhere, sinks can be folded away to save space.



VERSATILITY.

With our motorhomes, you can do much more than just travel. They are also perfect for moving home or for big shopping trips — and all the aspects of everyday life.

ADVANTAGES AT A GLANCE



COMFORT.

We wish you a pleasant journey and make sure you have one. With an interior that offers a multitude of amenities as standard. More than one would expect on the road. You just have to look at the spacious comfort bathroom. Or the generously sized double beds.



*When camping, the journey is the reward.
Enjoy every kilometre.*



DESIGN.

Our motorhomes are exceptionally stylish and modern — our contribution to truly wonderful vacation. This claim is implemented brilliantly in every detail — as can be seen in the top cabinet doors with indirect LED lighting.

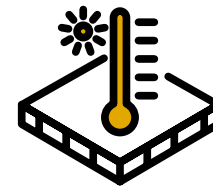


QUALITY.

Karmann-Mobil stands for durable and reliable motorhomes. This is ensured by selected quality in materials and workmanship. We are convinced of this and that's why we offer a 5-year guarantee against leaks, for example.

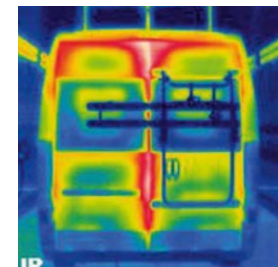
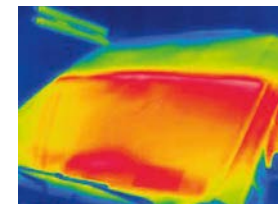


Winter can come –
our motorhomes are
perfectly insulated.



ALL-WEATHER.

All our vehicles are suitable for winter use. High-performance heaters, excellent insulation and perfectly insulated tanks, as well as full sealing ensure that our motorhomes are fun year-round. Even in the winter.





All information provided in this brochure refers to the products listed here and does not apply to other products provided by Eura Mobil GmbH. The models pictured in this brochure show the furnishings for the German market. In some cases, they also include special equipment and accessories not included in the standard scope of delivery. All weights are values with a variation of +/- 5 percent. Deviations from the model variants and equipment described here could be possible due to legal regulations in different countries. Please consult your Karmann-Mobil dealer pertaining to the exact scope and the available program of model-specific as well as model-independent equipment. Subject to errors and changes of construction, equipment and special equipment. All previous catalogues lose their validity with publication of this brochure.

© Eura Mobil GmbH 2019 / Reprinting, even in part, requires the express written permission of Eura Mobil GmbH.

As of: August 2019

CATALOGUE 2019|2020

KARMANN-Mobil · Eura Mobil GmbH
Kreuznacher Straße 78 · 55576 Sprendlingen, Germany
T +49 6701 203 800 · F +49 6701 203 809
www.karmann-mobil.de

